

# Emergency Assistance To Non-Public Schools EANS

---

*Under the  
Coronavirus Response and Relief Supplemental Apportions (CRRSA) Act*



**NEBRASKA** DEPARTMENT OF EDUCATION

# GEER FUND

Governor's Emergency Education Relief Fund

## ESSER I

Elementary and Secondary School Emergency Relief Fund

Coronavirus Aid Relief and Economic Security (CARES) Act

Elementary and Secondary School Emergency Relief (ESSER I) Fund

Nebraska - \$6,425,042

Equitable Services – through LEA

March 13, 2020 – September 30, 2022

Digital Divide, Essential Needs, and Return to Learn

## EANS

Emergency Assistance to Non-Public Schools

Coronavirus Response and Relief Supplemental Appropriations (CRRSA) Act

Governor's Emergency Relief (GEER II) Fund

Nebraska - \$17,072,129

Assistance or Services – NDE or Designated Fiscal Agent

March 13, 2020 – September 30, 2023

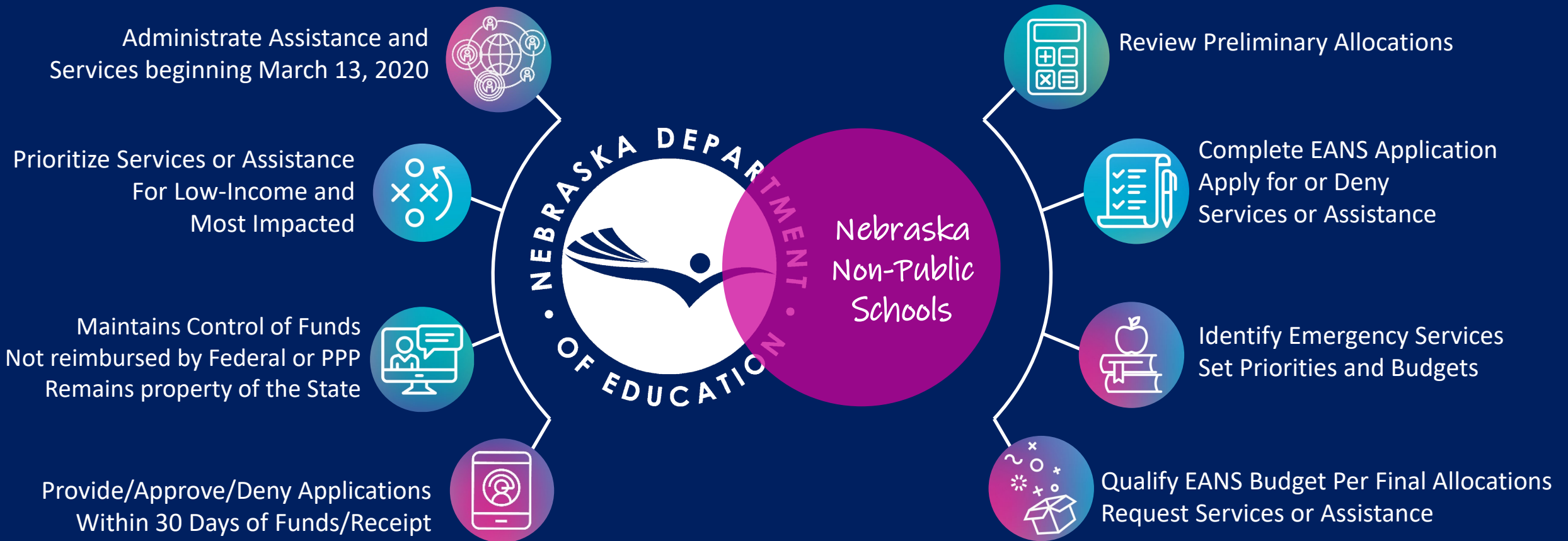
Academic Recovery & Acceleration and Supplemental Safety

VS



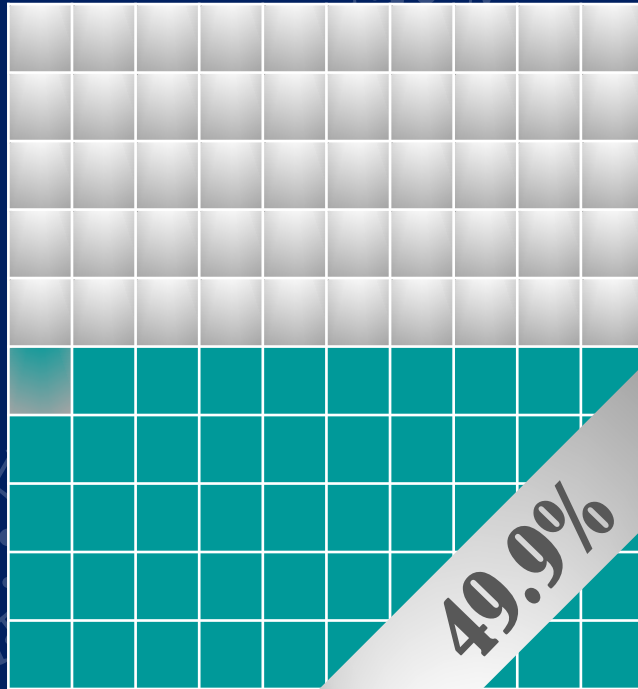
NEBRASKA DEPARTMENT OF EDUCATION

# PROGRAM REQUIREMENTS



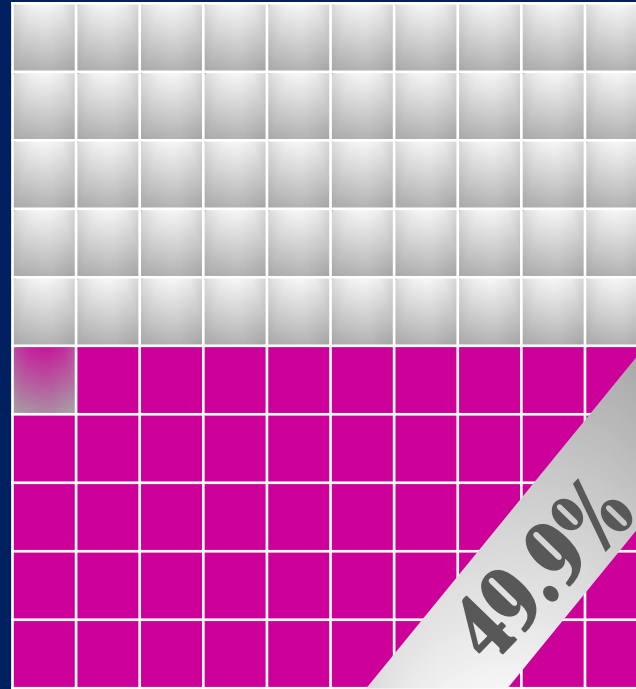
# Allocation Method

Preliminary Allocation | \$17,072,129



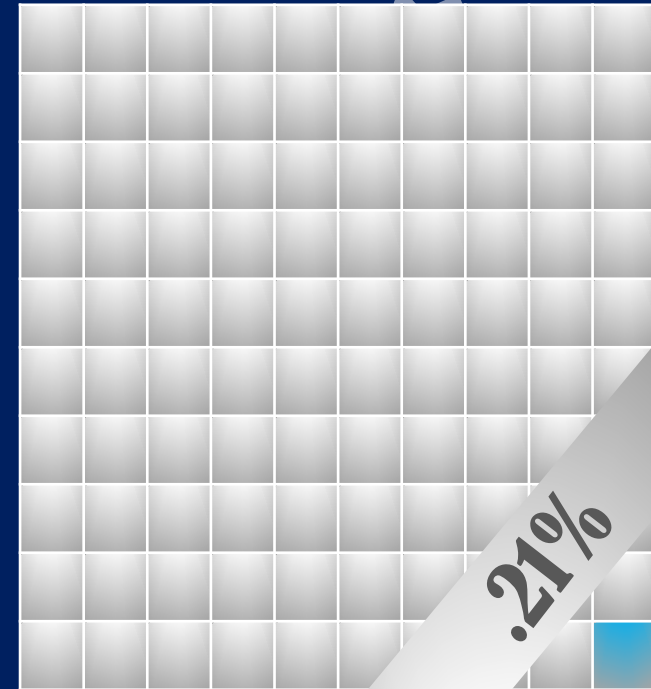
## Base Allocation

Based on Student Enrollment Counts  
2019-20 K-12 Membership/CDC  
\$252.48 Per Pupil | \$8,518,429



## Additional For Low-Income

Based on Free or Reduced Lunch Counts  
2019-20 K-12 FRL/CDC  
\$1,460.86 Per Pupil | \$8,518,286  
17% of Non-public Enrollment is Low-Income



## Minimum Threshold

Allocates a minimum of \$5,000 to each  
eligible non-public school  
14 Non-Public Schools | \$35,414





# LAUNCHING THE EANS APPLICATION



APPLY NOW



## Eligibility

- Non-profit
- Accredited or Approved under the NDE Rule 10 or 14
- Operated prior to March 13, 2020



## Student Data

Acknowledge NDE collected 2019-2020 student enrollment and Free and Reduced Lunch counts through the Nebraska Consolidated Data Collection (CDC)



## Paycheck Protection Program (PPP)

- Did not/will apply for and receive loan under PPP on or after December 27, 2020
- Amounts received prior to December 27, 2020



## Impact of COVID-19

Factors may include:

- Tuition revenue
- Decreased enrollment
- Insufficient technology
- Evidence-based learning loss due to COVID-19

*Certify & Assure*



# EANS Program Timeline

March 1	Preliminary Allocations Posted
March 1	EANS Application Released
March 1-30	Schools Complete/Submit Applications
April 1-30	Final Allocations Posted
May 1	Schools Qualify Budgets, Request Assistance
June 28	Obligation Date Under PO or Contract



# Contact for Questions

*Jim Kent*

Office of ESEA Programs, Nebraska Non-Public Ombudsman  
Jim.Kent@nebraska.gov

*Jen Utemark*

Office of Budget & Grants Management, Administrator  
Jen.Utemark@nebraska.gov



**NEBRASKA** DEPARTMENT OF EDUCATION

# EANS FUNDS- ALLOWABLE USES

---

- Supplies to sanitize, disinfect, and clean school facilities
- Personal Protective Equipment
- Improving ventilation systems, including windows or portable air purification systems
- Training and professional development for staff on sanitation, the use of PPE, and minimizing spread of infectious diseases
- Physical barriers to facilitate social distancing
- Other materials, supplies, or equipment to implement health protocols recommended by the CDC for reopening and operation of schools to effectively maintain health and safety



# EANS FUNDS – ALLOWABLE USES CONTINUED

---

- Expanding capacity to administer coronavirus testing to effectively monitor and suppress the virus
- Educational technology to assist students, educators, and other staff with remote or hybrid learning (can include hardware, software, connectivity, assistive tech, or adaptive tech)
- Redeveloping instructional plans, including curriculum development, for remote learning, hybrid learning or to address learning loss
- Leasing of sites or spaces to ensure safe social distancing
- Reasonable transportation costs

# EANS FUNDS – ALLOWABLE USES CONTINUED

---

- Initiating and maintaining education and support services or assistance for remote learning, hybrid learning, or to address learning loss
- Reimbursement for the expenses of any services or assistance described above that a non-public school incurred on or after March 13, 2020. (there are some exceptions on the next slide)

# EANS – FUTURE ALLOWABLE BUT NOT PAST REIMBURSALE

---

- Improvements to ventilation systems (including windows), except for portable air purification systems, which may be reimbursed
- Any expenses reimbursed through a loan guaranteed under the PPP (15 U.S.C. 636(a)) prior to December 27, 2020
- Staff training and professional development on sanitization, the use of PPE, and minimizing the spread of COVID-19
- Developing instructional plans, including curriculum development, for remote or hybrid learning or to address learning loss
- Initiating and maintaining education and support services or assistance for remote or hybrid learning or to address learning loss

# EANS FUNDS – UNALLOWABLE ACTIVITIES

---

- Capital Improvements/Projects: Construction, HVAC, and Boiler Systems
- Faculty/Staff Salaries
- Permanent Renovations
- School Busses
- General Operational Costs
- Financial assistance to scholarship granting organizations or related entities
- To provide or support:
  - vouchers, tuition tax credit programs, education savings accounts, scholarships, scholarship programs, or tuition-assistance programs

# THIRD PARTY VENDOR

---

NDE is pursuing agreement with a third-party vendor to provide services to non-public schools and to administer the grant.

The third party may provide any, or all, of the following general services:

- Accounting services of all funds allocated to nonpublic schools
- Compliance services in conjunction with the NDE
- Communication to both the nonpublic school and the NDE regarding allocation, school expenditures and spend down reports
- Procurement of supplies and services as needed
- Contracting with services providers
- Payments to vendors and service providers
- Any reports required by either the NDE, nonpublic schools, or any other entity for auditing and fiscal monitoring purposes



# Questions?

FAQ on the EANS program are available at this link.

[https://oese.ed.gov/files/2021/01/Final EANS FAQs 1.14.21.pdf](https://oese.ed.gov/files/2021/01/Final_EANS_FAQs_1.14.21.pdf)