



Important Update Regarding COVID-19

Date: July 6, 2020

Time: 4:00 pm CST

Agenda

- ❖ **Welcome from the Commissioner**
- ❖ Initial Comments from the Governor
- ❖ Public Health Updates
- ❖ Return to School 2020-2021
 - ❖ Regional Planning efforts- NRCSA
 - ❖ Comments and Thoughts from the Field
- ❖ ESU Update
- ❖ Launch Nebraska Update
- ❖ CARES Act Update

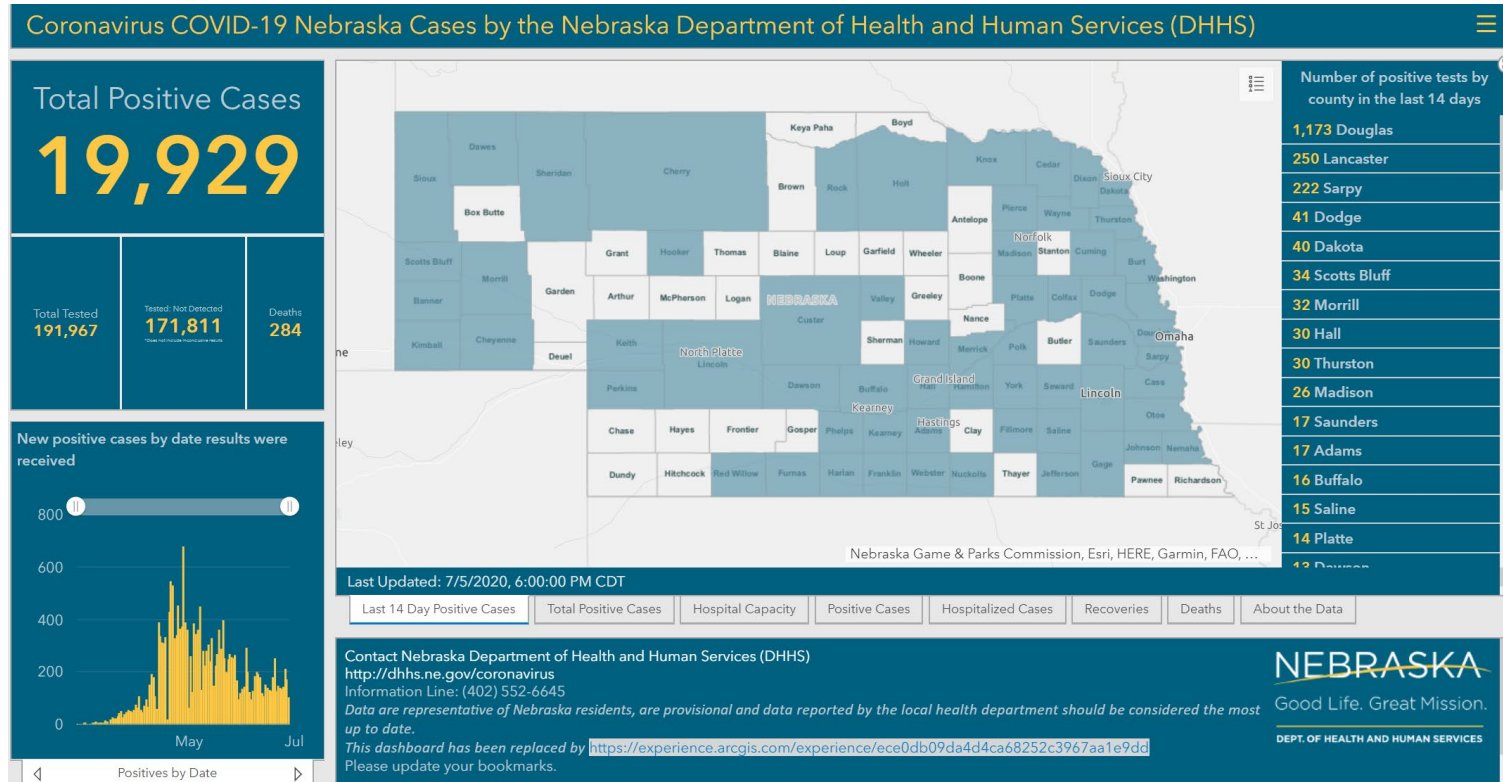
Agenda

- ❖ Welcome from the Commissioner
- ❖ **Initial Comments from the Governor**
- ❖ Public Health Updates
- ❖ Return to School 2020-2021
 - ❖ Regional Planning efforts- NRCSA
 - ❖ Comments and Thoughts from the Field
- ❖ ESU Update
- ❖ Launch Nebraska Update
- ❖ CARES Act Update

Governor's Comments

❖ Welcome from the Commissioner

❖ Initial Comments from the Governor



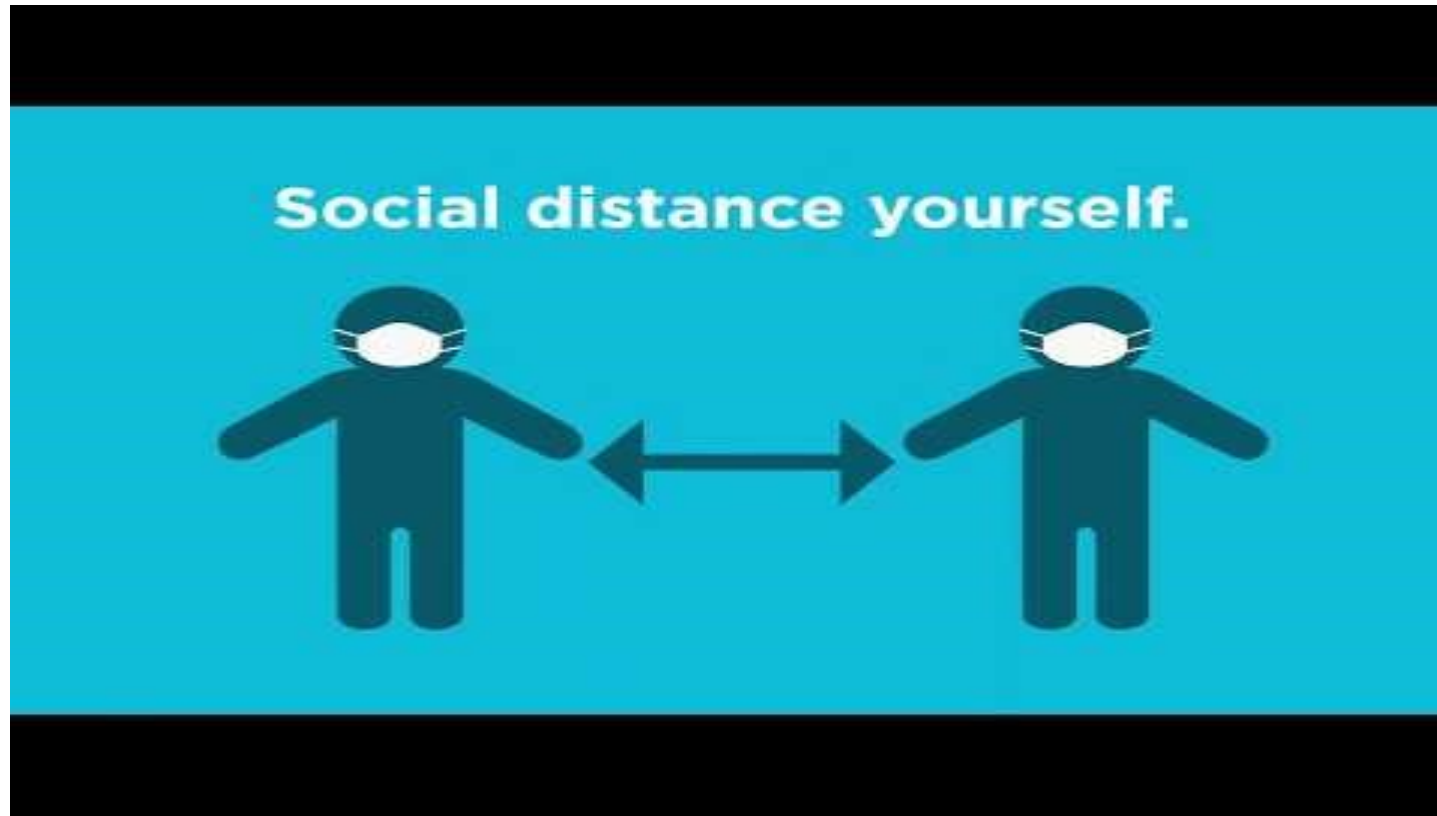
Agenda

- ❖ Welcome from the Commissioner
- ❖ Initial Comments from the Governor
- ❖ **Public Health Updates**
- ❖ Return to School 2020-2021
 - ❖ Regional Planning efforts- NRCSA
 - ❖ Comments and Thoughts from the Field
- ❖ ESU Update
- ❖ Launch Nebraska Update
- ❖ CARES Act Update

Public Health Update

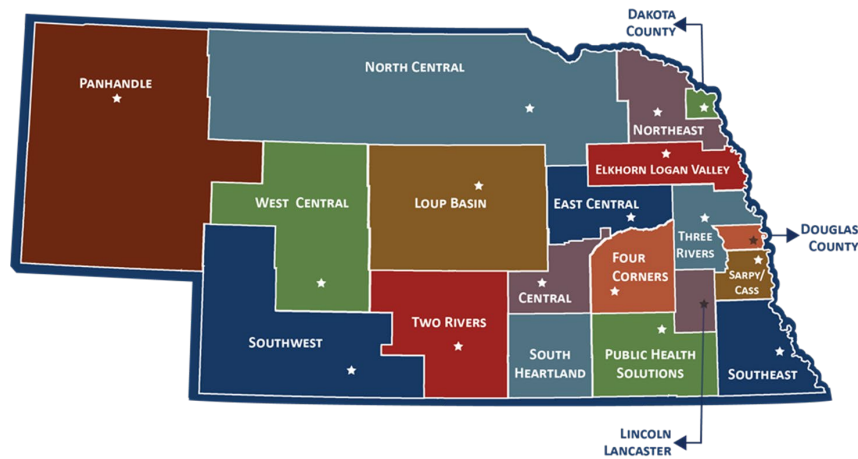
❖ Covering Face Campaign-

Joined by Pat Lopez and Charlotte Burke-Lincoln Lancaster County HD



Public Health Update

❖ Core Principles of Local Health Departments Joined by Teresa Anderson- Central District HD



NALHD
Nebraska Association of Local Health Directors

COVID-19 RESPONSE

Working with Schools

Below are shared core principles that local health departments (LHDs) in Nebraska consider when making recommendations and advising our local schools about how to safely reopen and stay open during the COVID-19 pandemic.

- LHDs statewide are monitoring and evaluating public health data related to COVID-19 in our local jurisdictions daily.
- LHDs want Nebraska schools to open and stay open. We recognize the unique nature of schools and the education system's role in the economic and mental wellbeing of children and adults.
- LHDs work closely with our local schools and ESUs to develop reasonable plans for social distancing and masking in school facilities to reduce the spread of COVID-19. These plans need to be locally-responsive and aim to create school environments that will minimize the impact on the school community and the student learning experience when students or staff test positive for COVID-19. **Key recommendations that these plans will include** when community spread is occurring include:
 - All staff and students wear cloth face coverings over their nose and mouth whenever possible.
 - General physical distancing of 6 feet between individuals whenever possible.
 - Frequent hand washing and/or hand sanitizing.
- **When a positive COVID-19 case is confirmed in a school, that individual will be excluded and allowed to return based upon current guidance from CDC at the time. LHDs will work with schools to consider the following questions when determining how that case will impact others in their classroom and/or school building.**
 - What is the level of community spread outside the school building?
 - Was the individual with COVID-19 wearing a mask most of the time?
 - Were other students and staff who were within 6 feet of the individual with COVID-19 for more than 15 minutes masked?
 - Was the individual with COVID-19 part of a cohort within the building or did they interact with a large number of students and staff throughout their day?
 - To what extent is the school community implementing other non-pharmaceutical interventions (hand washing, hand sanitizers, etc.)?
- The answers to these questions will determine 1) the number of close contacts, 2) if the close contacts who are not symptomatic may stay in the classroom, and 3) the number of other students and staff who will need to be quarantined.

Version - July 1, 2020

Agenda

- ❖ Welcome from the Commissioner
- ❖ Initial Comments from the Governor
- ❖ Public Health Updates
- ❖ **Return to School 2020-2021**
 - ❖ **Regional Planning efforts- NRCSA**
 - ❖ **Comments and Thoughts from the Field**
- ❖ ESU Update
- ❖ Launch Nebraska Update
- ❖ CARES Act Update

Return to School 2010-2021

❖ **Regional Planning Efforts-NRCSA**

- Jack Moles (NRCSA)
- Vern Fisher (Gibbon)
- Brian Rottinghaus (Pawnee City)
- Mark Lenihan (Wayne)

Agenda

- ❖ Welcome from the Commissioner
- ❖ Initial Comments from the Governor
- ❖ Public Health Updates
- ❖ Return to School 2020-2021
 - ❖ Regional Planning efforts- NRCSA
 - ❖ Comments and Thoughts from the Field
- ❖ **ESU Update**
- ❖ Launch Nebraska Update
- ❖ CARES Act Update

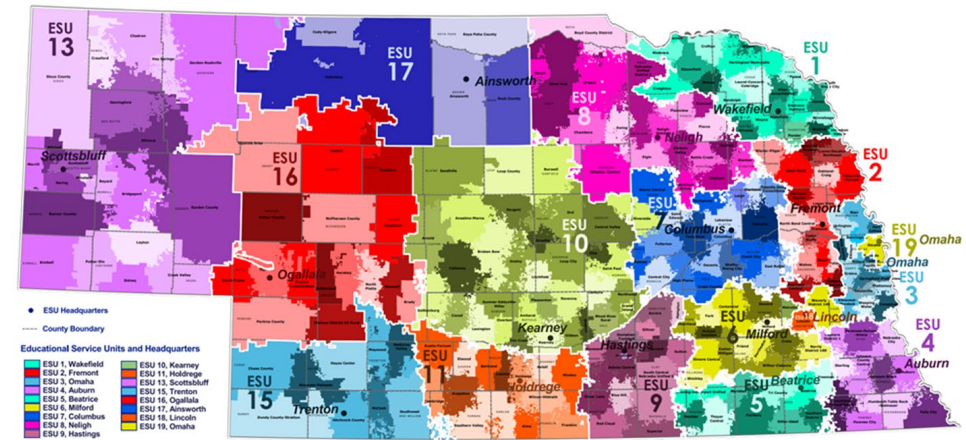
ESU Update

- Update regarding PPE
- Address masks and hand sanitizer order purchase status
- Mask Availability (number masks/students, size, etc.)

Joined by Kraig Lofquist



2017-18 Nebraska Public School Districts and Nebraska Educational Service Units



Agenda

- ❖ Welcome from the Commissioner
- ❖ Initial Comments from the Governor
- ❖ Public Health Updates
- ❖ Return to School 2020-2021
 - ❖ Regional Planning efforts- NRCSA
 - ❖ Comments and Thoughts from the Field
- ❖ ESU Update
- ❖ **Launch Nebraska Update- Lane Carr**
- ❖ CARES Act Update

Launch Nebraska Update

- ❖ Leadership & Planning
 - ❖ Guidance on Attendance
 - ❖ Human Capital Considerations
- ❖ Conditions for Learning
 - ❖ Leveled guidance under review
- ❖ Continuity of Learning
 - ❖ Buildout of *Transitions*



In simplest form, scenario planning involves three phases of planning work

First

- Create committee and outline decision making
- Vision of Success
- Priorities
- Define Parameters for Each of 3 Scenarios
- Survey families and faculty

Next

- For each scenario (at each grade span)
- Determine schedule
- Develop staffing plan
- Device plan
- Check against budget

Last

- Select common curriculum (content & SEL) and tech platform
- Develop assessment plan linked to curricular materials
- Professional learning plan for teachers
- Leader role clarity and support plan
- Final budget



Continuity of Learning

- Essential Instructional Content for Literacy and Mathematics:
 - What must students learn?
- Instruction Materials & Curriculum and:
 - How will each student learn this content, whether in-person or remote?
- Assessment:
 - How prepared and how well is each student learning this content?
- Professional Learning:
 - How will teachers be prepared to teach this content effectively, whether in-person or remote, and meet the needs of each student?



Continuity of Learning – Cont.

- Guidance will include:
 - Clear **questions** around which educators and communities can organize their decision-making in each area
 - Key **actions** to consider for the next academic year, to support learning that may be in-person, remote, or hybrid
 - Actionable **steps** informed by practitioners and experts to support decision-making
 - Curated and vetted **tools and resources** to support decision-making
 - Easily **customizable, adaptable** documents

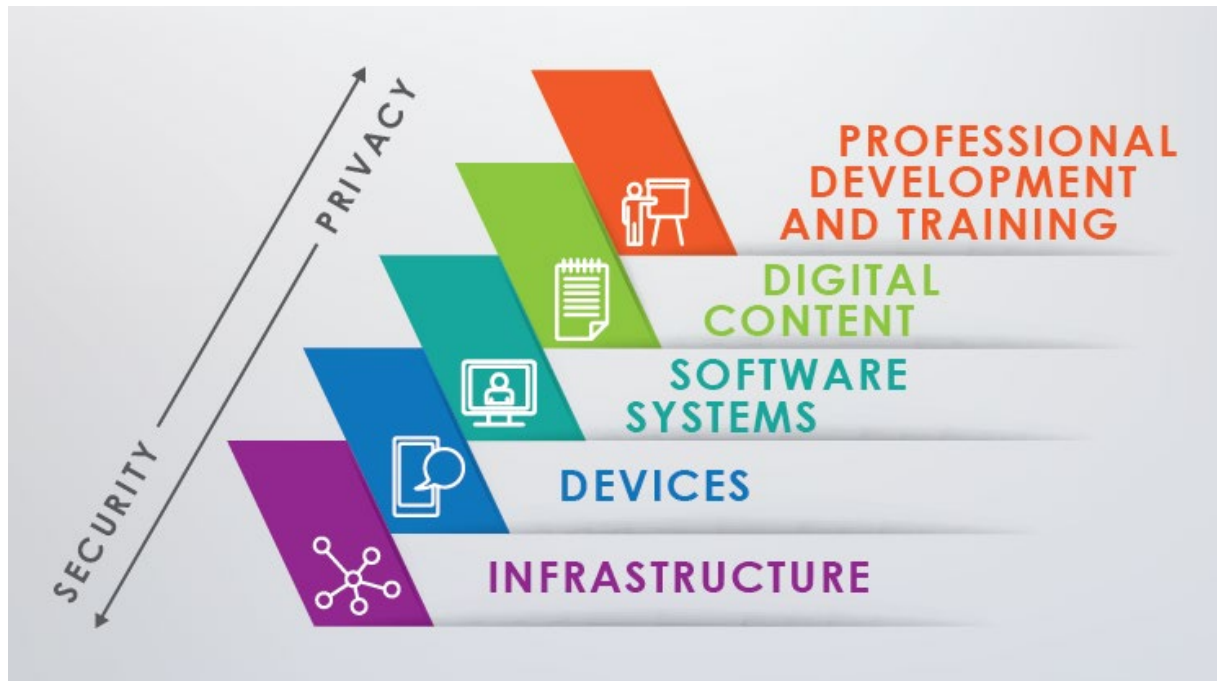
Identify Priorities

- Drafting a process to support scenario planning
 - Start with looking back
 - What went well and what didn't go as well as intended during Spring 2020?
 - What does your data tell you about student learning needs prior to the interruption?
 - Begin with the end in mind
 - Ask your team: "At the end of this coming year, what do we want to be true? What do we want to look back and be able to say we made happen?"
 - Maintain an equity focus - Explicitly determine whose needs to design for first (Prioritization)
 - Ask your team to make a full list of the students that you are worried about and then ask every member of the team to rank the top three groups that you would design for first.
 - Define parameters for the three scenarios
 - What percentage of students and teachers will be home? Determine max. number of students to be in building, per local health guidance
 - Survey Families and Staff
 - What do we need to know about each family to understand the prioritized groups?
- More guidance coming

Agenda

- ❖ Welcome from the Commissioner
- ❖ Initial Comments from the Governor
- ❖ Public Health Updates
- ❖ Return to School 2020-2021
 - ❖ Regional Planning efforts- NRCSA
 - ❖ Comments and Thoughts from the Field
- ❖ ESU Update
- ❖ Launch Nebraska Update
- ❖ **CARES Act Update**

Digital Learning Profile and Plans



- District and Nonpublic schools submit a Digital Learning Profile and Plan
- **July 6, 2020**
 - Submission deadline
 - <http://www.Launchne.com>

Wrap- UP

- Each week we will try to address some of the questions that have surfaced through the ESU/regional conversations and other forums.
- As always, visit the www.education.ne.gov/publichealth page for additional information.
- Staff at the NDE are working to address key FAQs and other topics as we know them.
- Please continue to submit your questions to <https://www.education.ne.gov/publichealth/contact/>



Thank you!