

Multi-Tiered System of Supports (MTSS)

Wahoo Public Schools
Wahoo, NE
@wahoopublic
#GoWahooBlue
#ExcellenceEverywhere

Team Members

Shelley Maass <i>(Director of Student Services)</i>	Robert Barry <i>(AD/Asst Principal~6th-12th)</i>
Jennifer Johnson <i>(School Psychologist)</i>	Ben Kreifels <i>(Elementary Principal)</i>
Josh Snyder <i>(Director of Learning)</i>	Andrea Beaver <i>(Kindergarten)</i>
Marc Kaminski <i>(MS Principal)</i>	Paula Conrad <i>(Title I)</i>
Kim Forbes <i>(HS Math)</i>	Eileen Barks <i>(ESU2)</i>
	Cindy Klepper <i>(School Counselor)</i>

MTSS Defined...

MTSS is a framework that **promotes an integrated system connecting general education and special education**, along with all components of teaching and learning, into a **high quality, standards-based instruction and intervention system** that is matched to a student's academic, social-emotional and behavior needs. ~ NeMTSS

Common Elements Across Systems...

- Positive Behavioral Intervention Supports (PBIS)
- Response to Intervention (RtI)
- Continuous Improvement Process (CIP)
- Lesson Study
- Differentiated Accountability

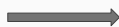
Roles of District Leadership...

- 1) Ensure a common-language, common-understanding around the rationale & purpose of implementation
- 2) Clearly identify who has responsibility for what & what accountability looks like
- 3) Ensure district policies support the initiative
- 4) Provide appropriate professional development/technical assistance to support the implementation

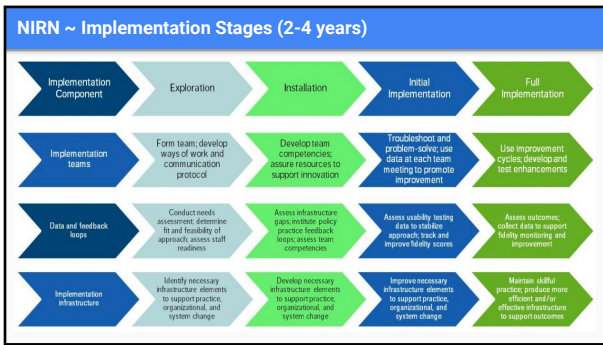
Where does MTSS fit?

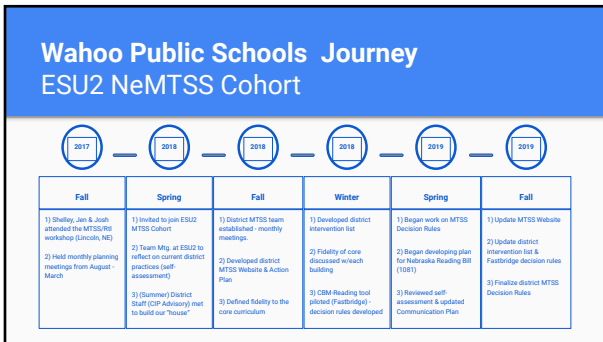
How does MTSS align with CIP, WEBSS & TIP?

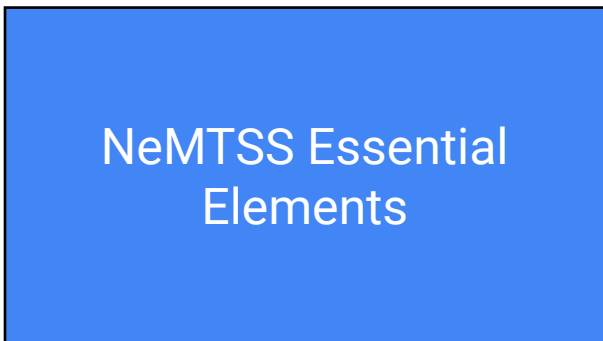
Problem Solving Model



*This is NOT just another initiative.
It IS the framework/glue.*







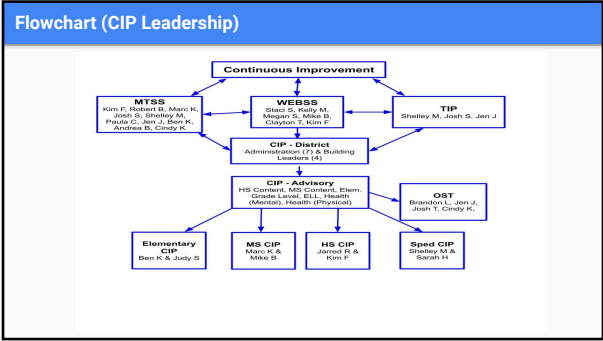


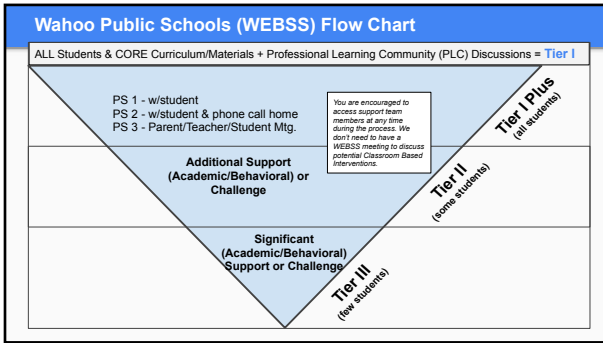
MTSS Self-Assessment Results		
Average by Component	4/9/2018	12/11/2018
Average Shared Leadership	1.50	
Average Communication, Collaboration, and Partnerships	1.67	
Average Evidence-Based Instruction, Intervention, and Assessment Practices	2.00	
Average Building Capacity/Infrastructure for Implementation	1.75	
Average Layered Continuum of Support	1.20	
Average Data-Based Problem Solving and Decision Making	1.30	

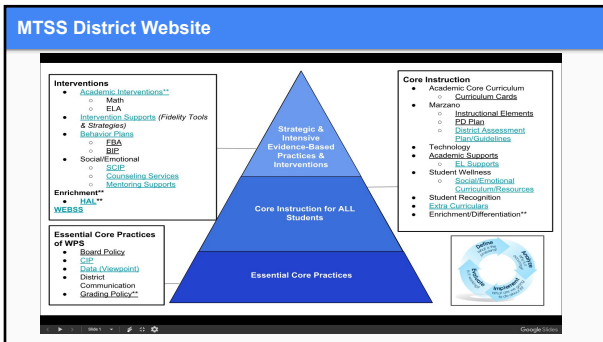
Improvement Plan Alignment (WPS Example)		
NeMTSS Improvement Plan Alignment Activity:		
Essential Element	Plan Name:	
Shared Leadership	Evidence: District Level Teams: <ul style="list-style-type: none"> • CIP Team (Building Leaders, Advisory & Buildings) • WEBS Team • MTSS • TIP • PLCs • Operations and Safety Team (OST) 	Missing: <ul style="list-style-type: none"> • Structure for teams (defined roles) Communication within the System: <ul style="list-style-type: none"> • Description of each CIP Team Layer • Role & Responsibilities: Who has decision making power? • Visuals for teams (flowchart)
Communication, Collaboration and Partnerships	Evidence: <ul style="list-style-type: none"> • PowerSchool & ICU List Communication • Website, Facebook, Twitter, Phone & Email • IEPs, WEBS, Academic Plans • Parent/Student Handbook • Parent-Teacher Conferences 	Missing: <ul style="list-style-type: none"> • Parent involvement on the level Described • Mutual Commitments within the system (What school will do and what families will do) • Consistent Parental Perceptual Survey (Yearly as part of CIP)

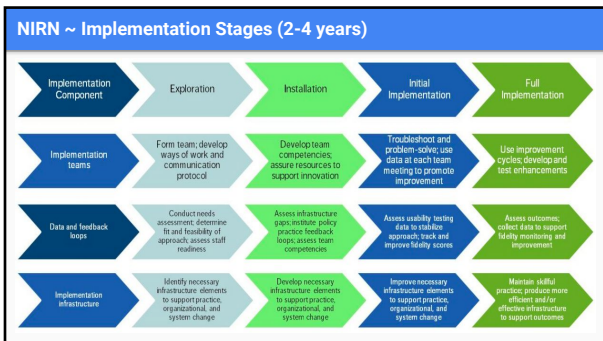
WPS - MTSS Action Plan				
MTSS Work Session Action Plan				
DISTRICT: Wahoo Public Schools				
Targeted Goal: Strengthen our Core Instructional Model				
Action Step Description	Resources or Training Needed	Who will lead this action step?	How will it be evaluated?	Target Completion Date
1. Identify a District Problem-Solving Model (CIP Model) 1.a. comparison of plans from CIP, EBA/AQUESTT, MTSS, TIP	None Completed Documents	MTSS Team & TIP Team	Does it meet our core values? Is it followed with fidelity?	6/21/18
2. Core Reading Curriculum Alignment & Essential Learnings Identification (at the elementary level)	-Time to complete w/grade level teams -Updated curriculum cards (K-5, 6th - 12th)	Josh & Ben Josh	-Utilization of Pacing Guide -Walk-through data -Use of Essential Learning Assessments (ELAs) for each quarter for data analysis	in progress initial steps done by 6/2019
3. Prioritizing Marzano Strategies	- Pre-service training	Admin Team Eileen D.	- Observation/ walk-through data	initial steps by end of 1st quarter (COMPLETED 8/31/18)

District Developed Materials









Go As Slow As Needed, But Go!

Questions?

Contact Information & Further Questions

Josh Snyder - jsnyder@wahoowarriors.org
