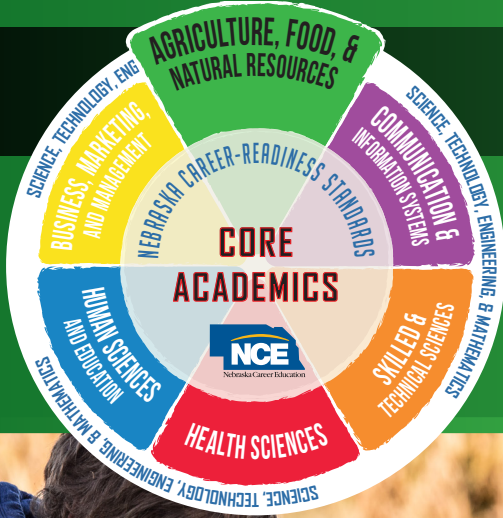




# Agriculture, Food and Natural Resources (AFNR)

This career cluster prepares for careers in planning, implementation, production, management, processing and/or marketing of agriculture commodities and services, distribution, financing, and development of agricultural commodities and resources including food, fiber, wood products, natural resources, horticulture, and other plant and animal products. It also includes related professional, technical and educational services.



## AFNR H3 OCCUPATIONS

	Average Entry Wage
Farm Equipment Mechanics and Service Technicians	\$27,205
Environmental Engineers	\$55,064
Soil and Plant Scientists	\$36,980
Water and Wastewater Treatment Plant and System Operators	\$30,039
Buyers and Purchasing Agents, Farm Products	\$40,472
Biological Technicians	\$28,094
Environmental Engineering Technicians	\$27,585

This H3 list based on projected highest number of openings in Nebraska through 2024.  
Source: Nebraska Department of Labor, Office of Labor Market Information.



## TYPICAL HIGH SCHOOL CLASSES

Ag Food and Natural Resources

Animal Science

Plant Science

Horticulture

AgriBusiness

Veterinary Science

Environmental and Natural Resources

Nursery and Landscape

Food Science

Welding

Small Engines

## CAREER & TECHNICAL STUDENT ORGANIZATIONS

GET INVOLVED WITH THESE ORGANIZATIONS!



## VIRTUAL CAREER TOURS OF NEBRASKA BUSINESSES



Find more H3 jobs at: [h3.ne.gov](http://h3.ne.gov)

[www.necareertours.com](http://www.necareertours.com)

Education Pathways to begin your career	Certificate	Diploma	Associate Degree	Bachelor's Degree	Military
AGRIBUSINESS	✓		✓	✓	
AGRICULTURE EDUCATION TEACHER				✓	
AG SCIENCES / PRECISION AG	✓	✓	✓	✓	
AGRICULTURE BUSINESS & MANAGEMENT TECHNOLOGY	✓		✓	✓	
AGRONOMY			✓	✓	
ANIMAL SCIENCE			✓	✓	
DAIRY TECHNICIAN / SCIENCE		✓		✓	
DEERE CONSTRUCTION & FORESTRY EQUIPMENT TECH			✓		
DIESEL TECHNOLOGY - AG EQUIPMENT			✓		✓
DIVERSIFIED AGRICULTURE			✓	✓	
ENVIRONMENTAL SCIENCE			✓	✓	✓
FOOD SCIENCE				✓	✓
HORTICULTURE & GOLF COURSE MANAGEMENT			✓	✓	
LIVESTOCK MANAGEMENT			✓	✓	
MECHANIZED AGRICULTURE			✓	✓	
NATURAL RESOURCES			✓	✓	✓
VETERINARY TECHNOLOGY / SCIENCE			✓	✓	✓

Advanced and professional degrees not included on this chart.

Check out all education and training options. Entry into these careers may begin with:

- Apprenticeships
- On-the-job training
- Attaining stackable credentials
- Entry-level employment

Entrepreneurship is a career choice!



Start your own business!



One out of every three jobs in Nebraska is ag related.

## EXPLORE MORE AT

For diplomas, certificates and associate degrees in most NE Community Colleges: [www.mygreatcareer.com](http://www.mygreatcareer.com)

For all types of pathways including professional degrees: [www.NebraskaCareerConnections.org](http://www.NebraskaCareerConnections.org) or [www.mynextmove.org](http://www.mynextmove.org)

For military careers: [www.careersinthemilitary.com](http://www.careersinthemilitary.com) or [www.todaysmilitary.com](http://www.todaysmilitary.com)

It is the policy of the Nebraska Department of Education not to discriminate on the basis of gender, disability, race, color, religion, marital status, age or national origin in its education programs, administration, policies, employment or other agency programs.

This project was funded through the Carl D. Perkins Career and Technical Education Act of 2006, administered through the Nebraska Department of Education. However, the contents do not necessarily represent the policy of the United States Department of Education, and you should not assume endorsement by the Federal Government.

Funding provided through the Nebraska VR Career Pathway Advancement Project

