



Growing a thriving community of
out of school time providers



LEVERAGING DATA AND INSIGHTS TO DRIVE PROGRAM QUALITY AND SUPPORT BETTER OUTCOMES FOR YOUNG PEOPLE

Anne E. Herman, Ph.D.

Noni Williams



Collective For Youth - Omaha



PROVIDERS

- PROVIDERS RECEIVE TRAINING, ADVOCACY, SUPPORT
- PROGRAMS RECEIVE THE FUNDING THEY NEED
- A STRONGER SYSTEM HELPS THE OST COMMUNITY THRIVE

FUNDERS

- GIFTS ARE EFFICIENTLY ADMINISTERED
- GREAT PROGRAMS ARE OFFERED TO YOUTH WHO NEED IT MOST
- GIVING GOALS ARE MET

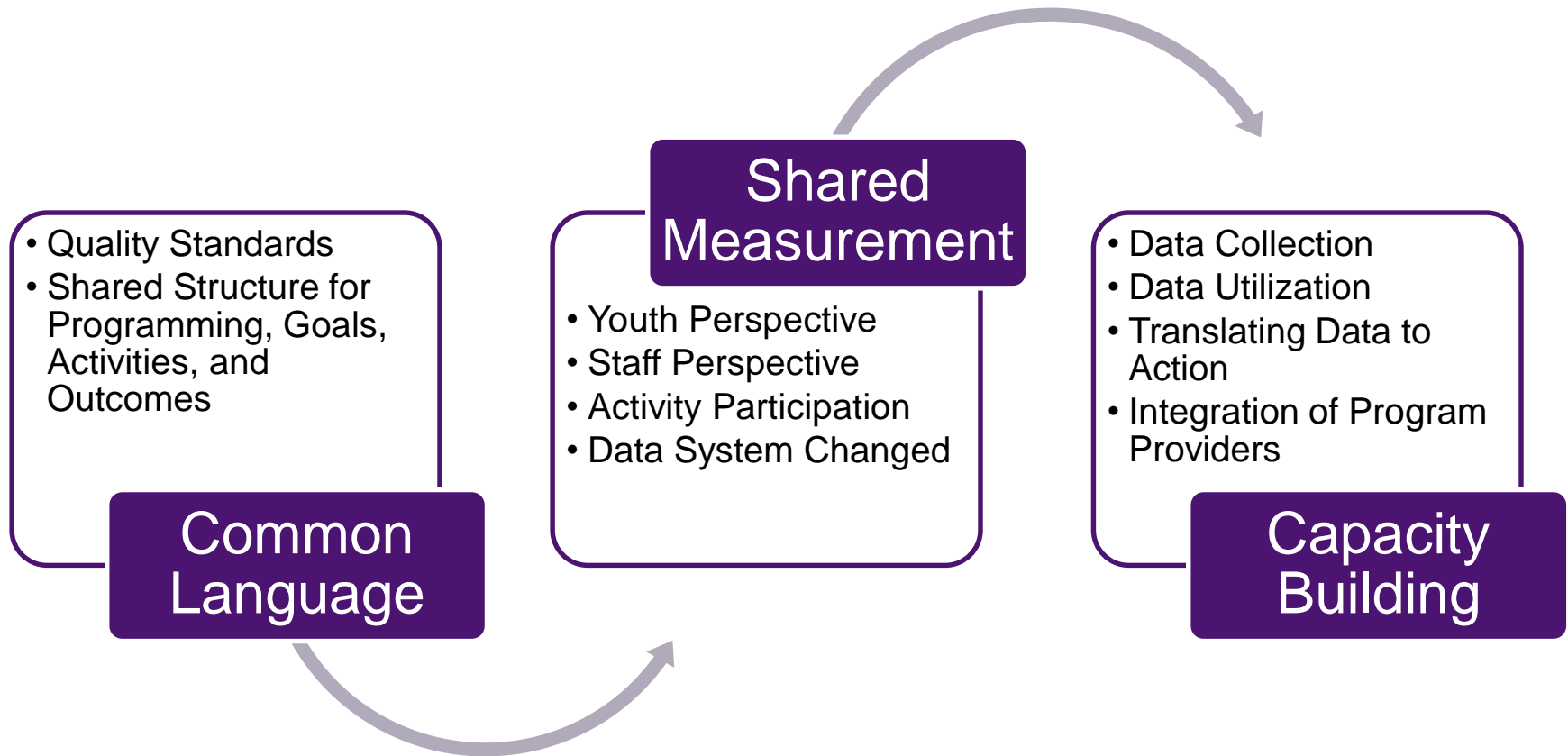
COMMUNITY

- SAFE AND HEALTHY YOUTH
- LIFELONG LEARNERS WHO ARE ENGAGED IN THE COMMUNITY
- A STRONG FUTURE WORKFORCE

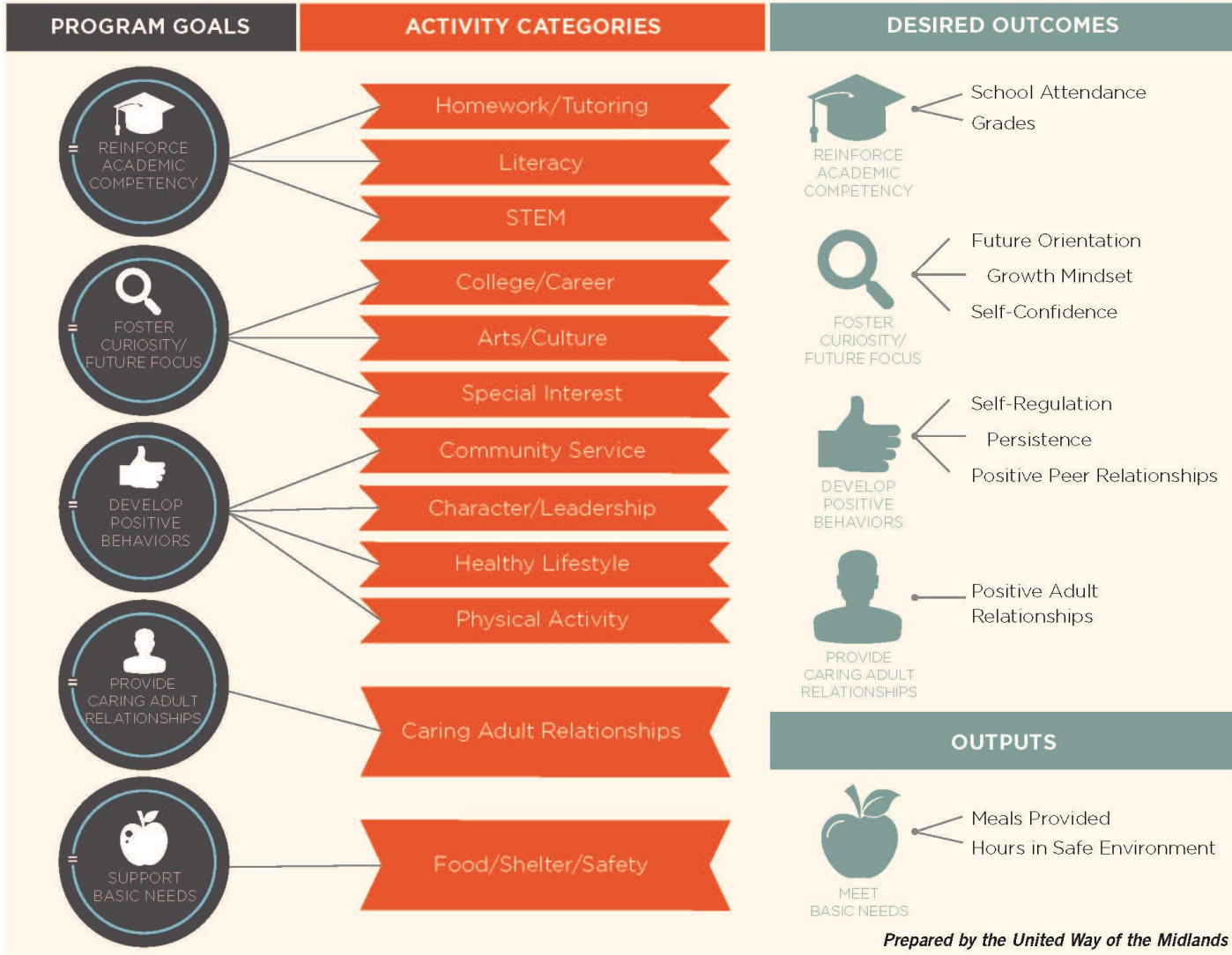
Impetus for Our Effort

- Desire for More Frequent Feedback
- Consistent Quality Improvement
- Demonstrating Impact
- Determining Direct and Indirect Outcomes
- Shared Measurement
- Value in Understanding Community Wide Effort
- Create a Shared Language In the Community
- Economies of Scale With Shared Agenda

Our Journey



Framework for Youth Outcomes in Out of School Time



Prepared by the United Way of the Midlands

What We Collect When

Sept &
Oct

- CFY Youth Outcomes Survey Fall
- CFY Staff Fall Survey
- PQA Self Assessment
- PQA External Assessment

March

- CLC School Teacher Survey
- CLC Parent Survey
- CLC Student Survey

April

- CFY Youth Outcomes Survey Spring
- CFY Staff Spring Survey
- PQA External Assessment

*also collect Average Daily Attendance (ADA) and Program Activity attendance by month

Developments Along the Way

- Creation of Additional Outcomes
 - Designed New Measurement Tool
- Realities of Implementation
- Program Focus
- Shared Opportunity Focus
 - Staff Turnover
 - Professional Development
- Technology Improvement
- Evaluation(s) Must Be Designed to Serve Multiple Purposes

Learnings and Recommendations From Our Experience

- Humans
 - Relationships and Trust
 - Ownership of Content
 - Clarity of Roles and Responsibilities
 - Tolerance of Ambiguity
 - Coping with Complexity
- Internalizing a Learning and Continuous Improvement Mindset
- Identify and Remove Barriers to Collective Success
- Research and Evaluation Agenda

Free Tools We All Can Use

- Action Reports
 - Before Action Report (BAR)
 - After Action Report (AAR)
- Adaptive Action Framework
- Focus Groups
 - Students
 - Staff
 - Parents
- Reflection Practice

COLLECTIVE FOR YOUTH

Growing a thriving community of
out of school time providers



QUESTIONS?

ANNE@AVAINSIGHTS.COM

NWILLIAMS@UWMIDLANDS.ORG

