



CHAMPIONS
For Equity in Education

Families and Schools

Building Positive Relationships for Student Success



Objectives

Attendees will:

- Be able to answer the question: Why is family engagement important?
- Hear examples of family engagement initiatives from three Nebraska school administrators
- Explore useful resources for growing awareness and facilitating conversations between school staff and families
- Advise NDE on possible next steps for supporting schools/districts in the area of Family Engagement

Introductions

Kim Larson, kim.larson@nebraska.gov, NDE Family and Community Engagement

Jon Cerny, jcerny@esu2.org, Superintendent and Elementary Principal, Bancroft-Rosalie Public Schools

Margaret Sandoz, msandoz@esu1.org, Superintendent and Elementary Principal, Niobrara Public Schools

Tammy Schaefer, tschaefer@crosscounty.esu7.org, Principal, Cross County Elementary, Cross County Community Schools

Why is family engagement important?

Research supports that when families are engaged and involved in schools, increased student learning results.

- Student's grades go up.
- They attend school more regularly.
- They are more likely to enroll in higher-level programs.
- They are more likely to graduate and go on to college.
- They are more excited and positive about school and learning.
- They have fewer discipline issues inside and outside class.

Why is family engagement important?

- Requirements in ESSA

<http://www.esc16.net/upload/page/0463/docs/Stafford%201%20Over%20view%20of%20Parental%20Involvement%20Under%20ESEA%2005262016.pdf>

- Identified in AQuESTT

<https://aquestt.com/tenets/>

- NE State Board of Education Strategic Vision and Direction

<https://nebraskaeducationvision.com/goals-and-outcomes/positive-partnerships-relationships-success/>

- Emphasis in current initiatives across NDE programs (required or best practice)
- Research regarding its connection to student engagement and student success in school

Where do I begin?

Examine core beliefs about family engagement in your school. The essential core beliefs include:

- All families have dreams for their children and want the best for them.
- All families have the capacity to support their children's learning.
- Families and school staff are equal partners.
- The responsibility for cultivating and sustaining partnerships among school, home, and community rests primarily with school staff, especially teachers.

Next steps...

Create building-level teams to focus on engaging family and community partners to help improve student success (include family members as part of the team).

Provide ongoing professional development for both school staff and families.

With your team, write an annual family engagement plan that is embedded in your continuous improvement plan.

Reflect on your family and community engagement events and program, at least annually, to understand what was implemented well and where improvements are needed.

Be part of regular conversations with school leaders to discuss partnership challenges and best practices.

Hear from Nebraska Administrators

**Jon Cerny, Superintendent and Elementary
Principal**

Bancroft-Rosalie Public Schools

**Margaret Sandoz, Superintendent and Elementary
Principal**

Niobrara Public Schools

Tammy Schaefer, Elementary Principal
Cross County Community Schools

Bancroft-Rosalie Family Engagement

Meetings/Events

- Computer Check-out Night
- Parent Advisory Committee- Title VIII
- MTSS at Kindergarten Round-up
- Parent/Grandparent Breakfasts
- Virtual Learning Days
- College-Career Readiness/Personal Learning Plans

Bancroft-Rosalie Teachers as Advisors Professional Development Plan

All advisors should know and understand:

How to read a student transcript

School graduation requirements, including required courses and options

Specific course requirements for each of the graduation pathways

Course offerings as outlined in the course description book

How to design a four-year Personal Learning Plan

Difference between college-preparatory, honors, and Dual Credit courses

Opportunities students have to earn post-secondary credit while in high school: Dual Credit, On-Line, Pathways 2 Tomorrow, Fridays at Northeast.

Post-secondary opportunities and entrance requirements for area community colleges, colleges, and universities

Bancroft-Rosalie Teachers as Advisors Professional Development Plan

All advisors should know and understand (continued):

Military opportunities and post-secondary training opportunities

Job Shadowing and school-sanctioned work opportunities that enable students to connect on-the-job experiences to their school work

State scholarship opportunities including the Buffett Scholarship

How students can access career information

Basic information about each of their advisees, including ethnic background, socio-economic status, grades, test results, school attendance, and previous disciplinary actions

How to conduct a successful advisement session

2017-2018 DIBELS Parent Report

Nonsense Word Fluency - Whole Words Read

NWF-WWR measures basic phonics and blending skills. Your student's score is at or above the goal. They are on track in sound blending.



DIBELS Oral Reading Fluency - Accuracy

DORF accuracy is the percent of words the student reads correctly. Your student's score is at or above the goal. They are on track in reading accuracy.



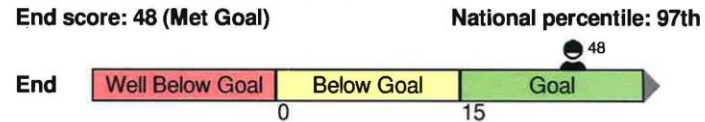
DIBELS Oral Reading Fluency - Words Correct

DORF measures the ability to read accurately and automatically. Your student's score is at or above the goal. They are on track in reading fluency.



DIBELS Oral Reading Fluency - Retell

RTF measures reading comprehension on DORF. Students tell back what they read. Your student's score is at or above the goal. They are on track in reading comprehension.



Bancroft-Rosalie Public Schools Family Engagement

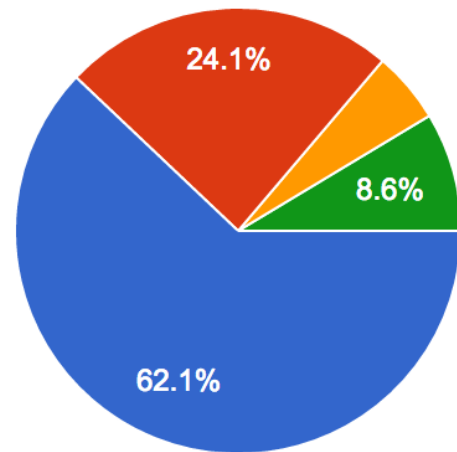
Technology

- Remind 101
- Parent Access to Powerschool / Canvas / Education Apps (IXL, XtraMath)
- Shared School Calendars
- Website News Articles- Staff assigned due dates
- Parent Surveys

Bancroft-Rosalie Public Schools Family Engagement

We are interested in knowing how well your children were prepared and responded to E-days. Which statement best describes your children.

(58 responses)



- They completed assignments independently.
- They completed assignments with some assistance.
- They completed assignments with a lot of help and encouragement.
- They were unable to access and complete their assignments.

Bancroft-Rosalie Public Schools Family Engagement

School Nurse

Free Admission for students to school activities

Mental Health Services provided at school

21st Century Community Learning Center Program

Jumpstart Summer School

Full Day Preschool- 3 and 4 year olds

Scholarships for Dual Credit students

Niobrara Public Schools Family Engagement

School nurse on-site daily

Free admission to school activities

Summer school to address summer slide

Full-day PreK for 3 and 4 year olds

A+ Scholarship for college credit classes (or High Ability Funding used to support those who don't qualify for the scholarship)

Niobrara Public Schools Family Engagement

School Facebook page coordinated by their parent group-
Niobrara School Supporters

Niobrara Public School

Indian Education Parent Committee to ensure tribes and
Native American parents can engage in conversations on
topics important to them

- Meets at least quarterly

Open house/Family Literacy night each semester

Niobrara Public Schools Family Engagement

Midwest and Plains Equity Assistance Center (MAP Center)

As a federally funded organization, funded by the US Dept. of Education and sanctioned under the 1964 Civil Rights Act, we offer free technical assistance surrounding issues of equity to local public school districts and state education agencies across our 13-state region.

greatlakesequity.org

Twitter @greatlakesEAC

Facebook @greatlakesequity

Cross County Community Schools

Family Communication

- See Saw
- Remind App
- Daily notebooks
- Weekly files
- Positive cards sent home

Cross County Community Schools

Engagement

- Community/Family Committee
 - Family Surveys
- Back to school open House
 - Punch card for families

Cross County Community Schools

Students sing National Anthem at football and basketball games- families get in free

Cougar Academy- recognize students for NSCAS scores

Family activities per quarter/semester

- Dr. Seuss Night

- Science Night

- Family Game night

- Fitness Night

- One Book One School

Facilitated IEP's

Cross County Community Schools

Give Back to the Community activities

Community Coffees

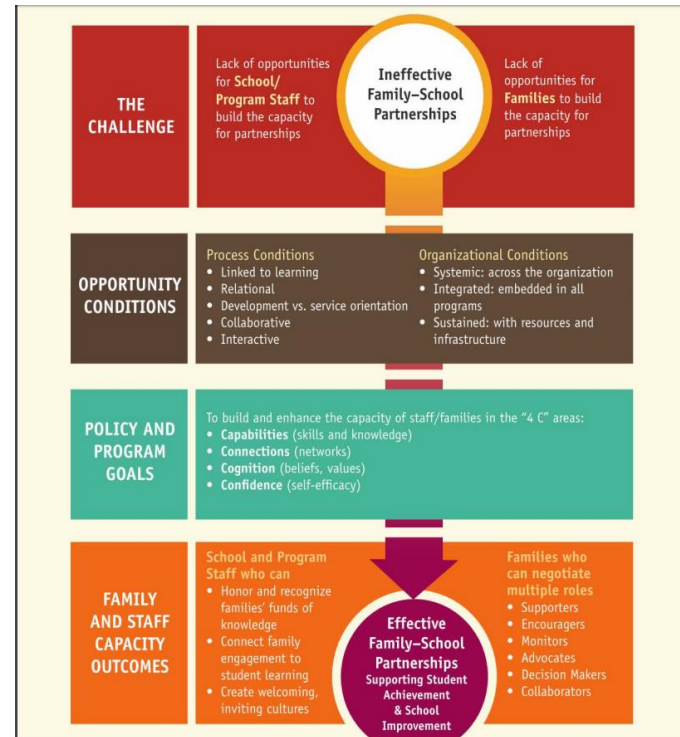
Weekly/Monthly Newsletters

Social Media

- Twitter/Facebook
- Publicize the great things occurring in the district

Resources to Explore

US Department of Education



Dual Capacity Framework

<https://www.ed.gov/parent-and-family-engagement>

Nebraska Department of Education

<https://www.education.ne.gov/FAMILY/>



[Family and Community Engagement Home](#)

[Educators](#)

[Families](#)

[Community Partnerships](#)

[Research](#)

[Questions, Comments, or Corrections? Let us know!](#)

"Raising the next generation is a shared responsibility. When families, communities and schools work together, students are more successful and the entire community benefits."

-U.S. Department of Education

The Nebraska Department of Education identified family engagement as an essential area of focus in its new Accountability for a Quality Education System, Today and Tomorrow (AQuESTT) within the tenant of Student Success and Access.

Engaging families and communities as partners with schools is essential, as the evidence is clear: partnerships contribute to children and youth's academic and social success. Current family and community engagement research, websites, and promising practices are available via the links below.

National Parent Teacher Association

National Standards for Family-School Partnerships, 2008

<https://www.pta.org/home/run-your-pta/National-Standards-for-Family-School-Partnerships>

PTA National Standards for Family-School Partnerships: An Implementation Guide

https://www.pta.org/docs/default-source/files/runyourpta/national-standards/national_standards_implementation_guide.pdf

Standard 1: Welcoming All Families into the School Community

Standard 2: Communicating Effectively

Standard 3: Supporting Student Success

Standard 4: Speaking up for Every Child

Standard 5: Sharing Power

Standard 6: Collaborating with the Community

Kansas Technical Assistance System Network

Engaging all Families series

10 modules, each 17 minutes long

<https://ksdetasn.org/kpirc/engaging-all-families-series>

Resource Library

<https://ksdetasn.org/search/resources>

Colorado Department of Education

These research briefs were developed by CDE and the State Advisory Council for Parent Involvement in Education (SACPIE) to provide information and implications for practice to school leaders as they establish family and community engagement partnerships focused on student achievement.

Creating Opportunity Conditions to Partner with Families in Student Learning

https://www.cde.state.co.us/uip/researchbrief_opportunityconditions

Improving Student Learning with Family and Community Engagement

http://www.cde.state.co.us/uip/researchbrief_studentoutcomes

Attendance Works

A national initiative aimed at advancing student success by reducing chronic absence

Hedy Chang, Director, Attendance Works

<http://www.attendanceworks.org/about-us/our-team/hedy-chang/>

“Chronic absenteeism is a sign that families have lost faith and hope that schools can deliver a better future for children...It is a sign that something is amiss.”

Online learning modules to reduce chronic absence

<http://www.attendanceworks.org/resources/teaching-attendance-curriculum/>

Bringing Attendance Home: Engaging Parents in Preventing Chronic Absence

This toolkit is filled with ideas, activities and materials you can use to spark conversations with parents.

<http://www.attendanceworks.org/resources/toolkits/bringing-attendance-home/>

Teacher Book Study

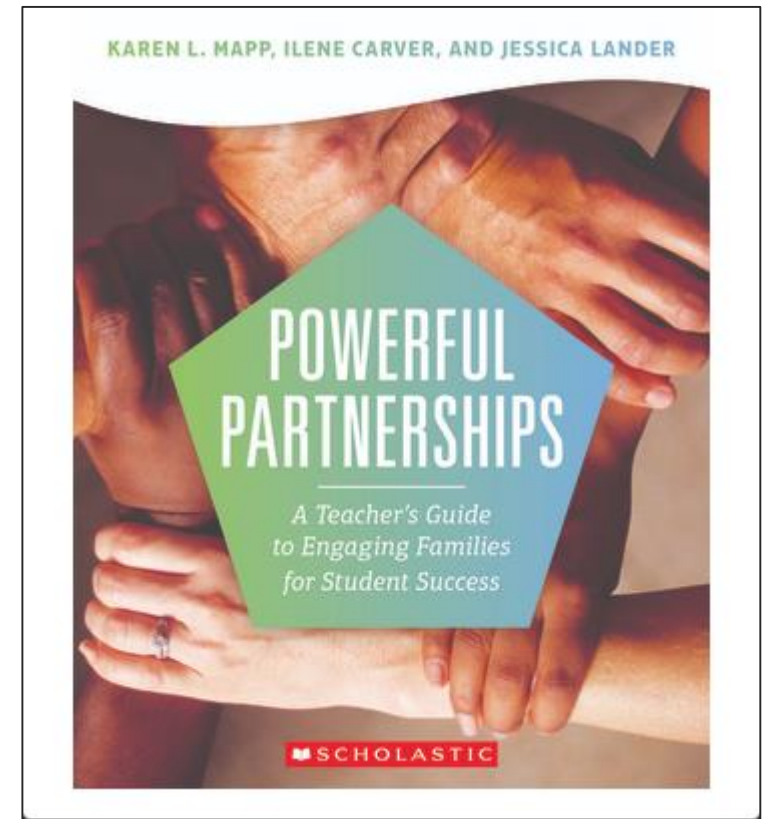
Powerful Partnerships: A Teacher's Guide to Engaging Families for Student Success

Karen Mapp, Ilene Carver and Jessica Lander

Scholastic, 2017

Book Study Guide

<https://www.scholastic.com/teachers/blog-posts/meghan-everette/17-18/A-Book-Study-Guide-for-Powerful-Partnerships/>





Let us know your suggestions regarding how NDE can support your efforts in the area of family/community engagement.



Thank You

Please leave your recommendations for NDE's next steps.