

reVISION

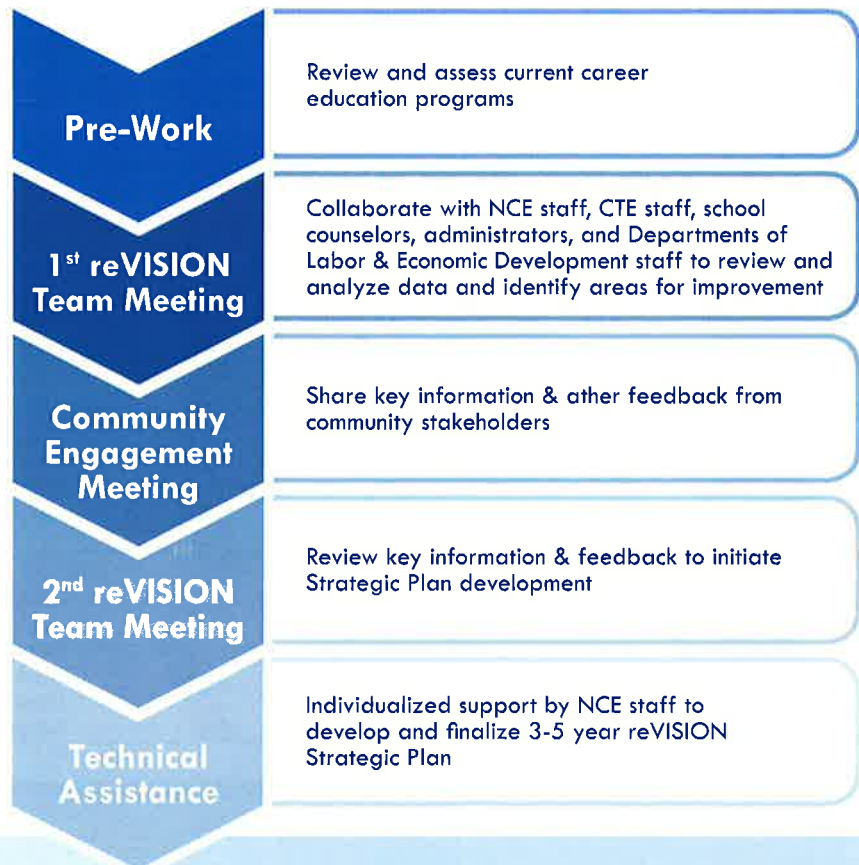
Establishing a clear vision for Nebraska Career Education

What is reVISION?

reVISION is a strategic approach for Nebraska schools to analyze their current Career Education system and make adjustments to more effectively prepare students for college **and** careers.

Why reVISION?

reVISION provides a unique opportunity to bring understanding, new energy, and commitment to Career and Technical Education as a vital education, workforce, and economic development strategy.



PARTICIPANTS

87

Districts completed

17

Districts will complete 2017-18

AWARDED

over **\$3M**

in Action Grants
Since first cohort in 2012-2013

For more information, contact:

Richard Katt

Director of Career Education

402.471.4808 | rich.katt@nebraska.gov

Katie Graham

Deputy Director of Career Education

402.471.3104 | katie.graham@nebraska.gov

Outcomes of reVISION



PARTICIPANTS

Ashland- Greenwood	Centura Chadron	Greeley-Wolbach Hastings	Northwest Northwest (GI)	Santee Scottsbluff	Wahoo Walthill
Auburn	Columbus	Kearney	O'Neill	Scribner-Snyder	Wausa
Aurora	Cozad	Lexington	Oakland-Craig	So Central Unified	Waverly
Bancroft-Rosalie	Creighton	Lincoln	Omaha	South Sioux City	Wayne
Beatrice	Crete	Logan View	Ord	Springfield	Weeping Water
Bellevue	Deshler	Lyons-Decatur	Osmond	Platteview	West Boyd
Bennington	Elm Creek	Madison	Palmyra	St. Paul	West Point
Bloomfield	Fairbury	Millard	Papillion La-Vista	Stanton	Westside
Boone Central	Fremont	Neligh-Oakdale	Pender	Superior	Wheeler Central
Bridgeport	Friend	Niobrara	Plainview	Sutton	Winnebago
Broken Bow	Gering	Norfolk	Plattsmouth	Tekamah-Herman	Wisner-Pilger
Burwell	Gibbon	Norris	Ralston	Thayer Central	Wood River
Cedar Bluffs	Gothenburg	North Bend	Randolph	Umo N Ho N Nation	
Central Valley	Grand Island	North Platte	Ravenna	Valentine	



Funds provided from the Carl D. Perkins Career and Technical Education Act of 2006, Reserve Funds, and Statewide Leadership Funds. It is the policy of the Nebraska Department of Education not to discriminate on the basis of sex, disability, race, color, religion, marital status, age, or national origin in its education programs, admission policies, employment, or other agency programs.